

Our grader parts are made by Black Cat Wear Parts — makers of high-quality aftermarket blades and castings.

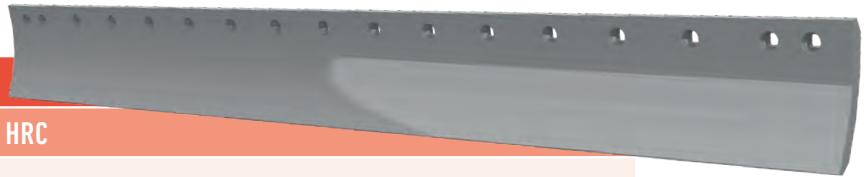


Grader Blades

CARBON STEEL BLADES

HARDNESS: 250-320 BRINELL, 25-34 HRC

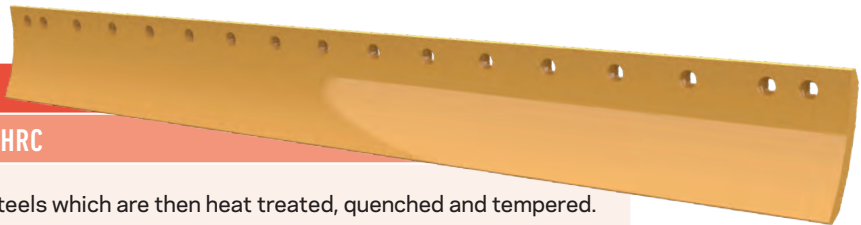
Manufactured using high carbon alloy steels which are processed in 'as rolled' condition.



HEAT TREATED BLADES

HARDNESS: 421-512 BRINELL, 45-52 HRC

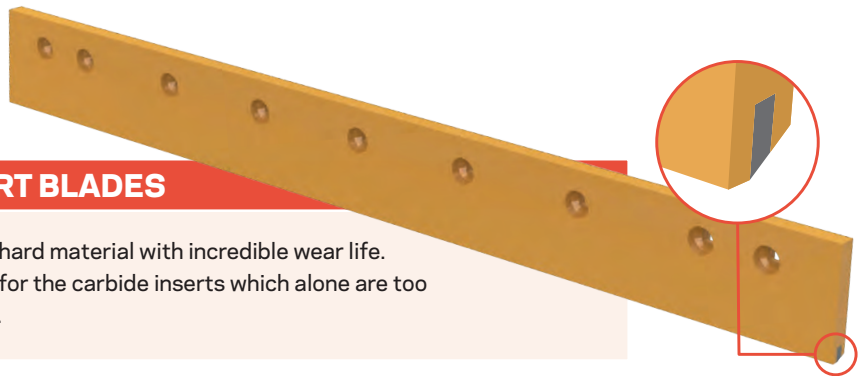
Manufactured using high alloy 'Boron' steels which are then heat treated, quenched and tempered.



Snow Plow Blades

TUNGSTEN CARBIDE INSERT BLADES

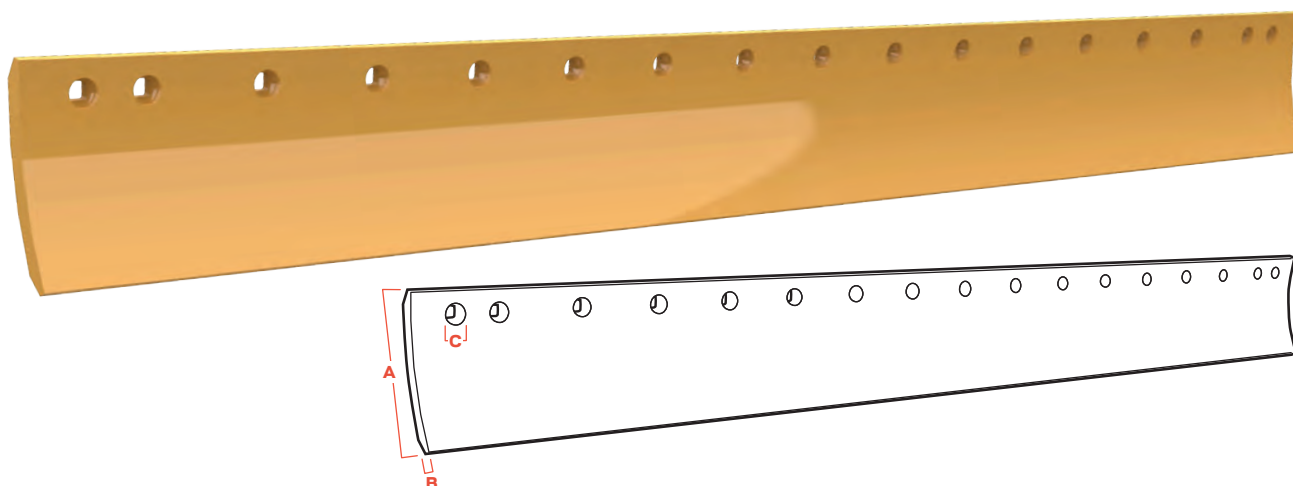
These carbide inserts are an extremely hard material with incredible wear life. The steel blade is primarily the "holder" for the carbide inserts which alone are too fragile to be used for plowing roadways.



JOMA 6000 SNOW PLOW BLADES

The JOMA 6000 blade is a unique design incorporating tungsten carbide inserts brazed into specially profiled steel segments which are then encased in rubber. The result is dramatically superior life when compared to existing carbide-insert blades.





5-foot Grader Blades

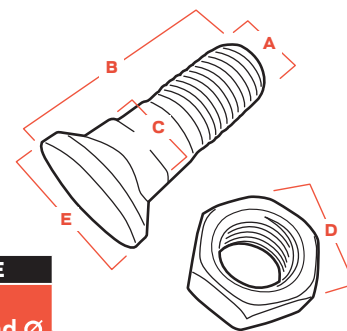
PART NUMBER	PROFILE	STEEL TYPE	BEVEL	WEIGHT (KG)	NO. OF HOLES	A	B	C
						WIDTH	THICKNESS	BOLT SIZE
GB-7D4508	Curved	Heat Treated	Double	24.3	11	6"	5/8"	5/8"

6-foot Grader Blades

PART NUMBER	PROFILE	STEEL TYPE	BEVEL	WEIGHT (KG)	NO. OF HOLES	A	B	C
						WIDTH	THICKNESS	BOLT SIZE
GB-7T1633-6	Curved	High Carbon	Double	29.4	13	6"	5/8"	5/8"
GB-5D9562	Curved	Heat Treated	Double	41.5	13	8"	5/8"	5/8"
GB-5D9558	Curved	Heat Treated	Double	50.1	13	8"	3/4"	5/8"
GB-7T1634-6	Curved	High Carbon	Double	50.5	13	8"	3/4"	5/8"
GB-7T1636-6	Curved	High Carbon	Double	41.7	13	8"	5/8"	5/8"

Hole Spacing Note:

For all grader blades, holes at each end of the blade have 3" hole spacing. All other holes have 6" hole spacing. See illustration above for reference.



Plow Bolts & Nuts

∅ = Diameter ● = Stocked Part

A Bolt ∅	B Bolt Length								C Bolt Square	D Nut Width (Across Flats)	E Head ∅
	1 3/4"	2"	2 1/4"	2 1/2"	2 3/4"	3"	3 1/4"	3 1/2"			
5/8"	●	●	●	●	●	●	●	●	15.9	23	26
3/4"		●	●	●	●	●	●	●	19.0	28	30

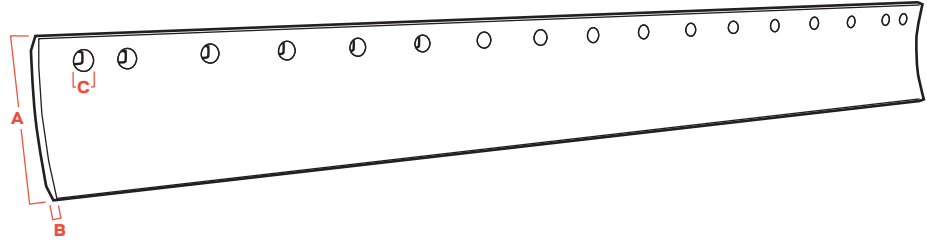
Step Down Bolts

PRODUCT	PART NUMBER
Plow Bolt 3/4-5/8" Step Down 2 1/4"	PB3458-214
Plow Bolt 3/4-5/8" Step Down 2 3/4"	PB3458-234

STANDARD BOLT SIZE NOTE

Standard blades take 2 1/4" bolts

All measurements in millimetres unless otherwise marked.



7-foot Grader Blades

PART NUMBER	PROFILE	STEEL TYPE	BEVEL	WEIGHT (KG)	NO. OF HOLES	A	B	C
						WIDTH	THICKNESS	BOLT SIZE
GB-7T1625-6	Curved	High Carbon	Double	57.7	15	8"	3/4"	3/4"
GB-5D9561	Curved	Heat Treated	Double	48.4	15	8"	5/8"	5/8"
GB-7D1158	Curved	Heat Treated	Double	48.1	15	8"	5/8"	3/4"
GB-5D9559	Curved	Heat Treated	Double	58.4	15	8"	3/4"	5/8"
GB-7D1577	Curved	Heat Treated	Double	58.2	15	8"	3/4"	3/4"
GB-4T2242	Curved	Heat Treated	Double	78.8	15	8"	1"	5/8"
GB-4T2233	Curved	Heat Treated	Double	78.4	15	8"	1"	3/4"
GB-7T1643-6	Curved	High Carbon	Double	48.7	15	8"	5/8"	5/8"

8-foot Grader Blades

PART NUMBER	PROFILE	STEEL TYPE	BEVEL	WEIGHT (KG)	NO. OF HOLES	A	B	C
						WIDTH	THICKNESS	BOLT SIZE
GB-8J4043-CD (Centre Drilled)	Curved	Heat Treated	Double	38.9	17	6"	5/8"	5/8"
GB-5D9731-12CD (Centre Drilled)*	Curved	Heat Treated	Double	55.4	10 (12" spacing)	8"	5/8"	5/8"
GB-7D1949	Curved	Heat Treated	Double	66.5	17	8"	3/4"	3/4"
GB-4T6511	Flat	Heat Treated	Double	112.5	17	10"	1"	3/4"

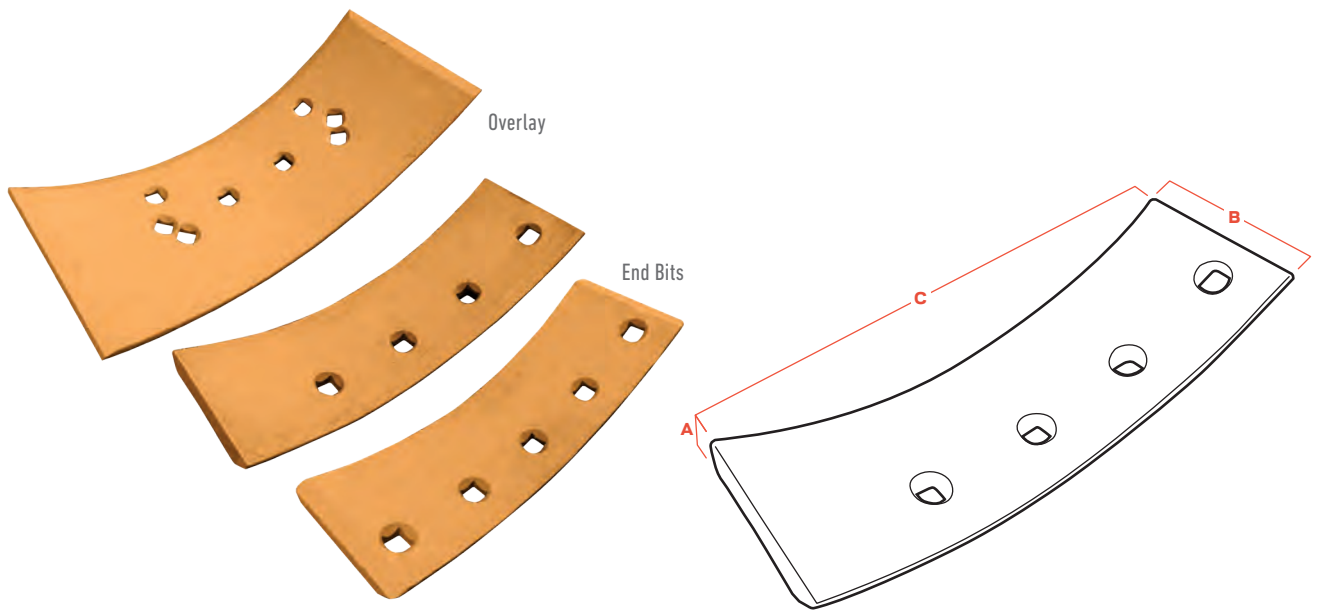
Hole Spacing Note:

For all grader blades, holes at each end of the blade have 3" hole spacing. All other holes have 6" hole spacing. See illustration above for reference.

* = Exception.

STANDARD BOLT SIZE NOTE

Standard blades take
2 1/4" bolts



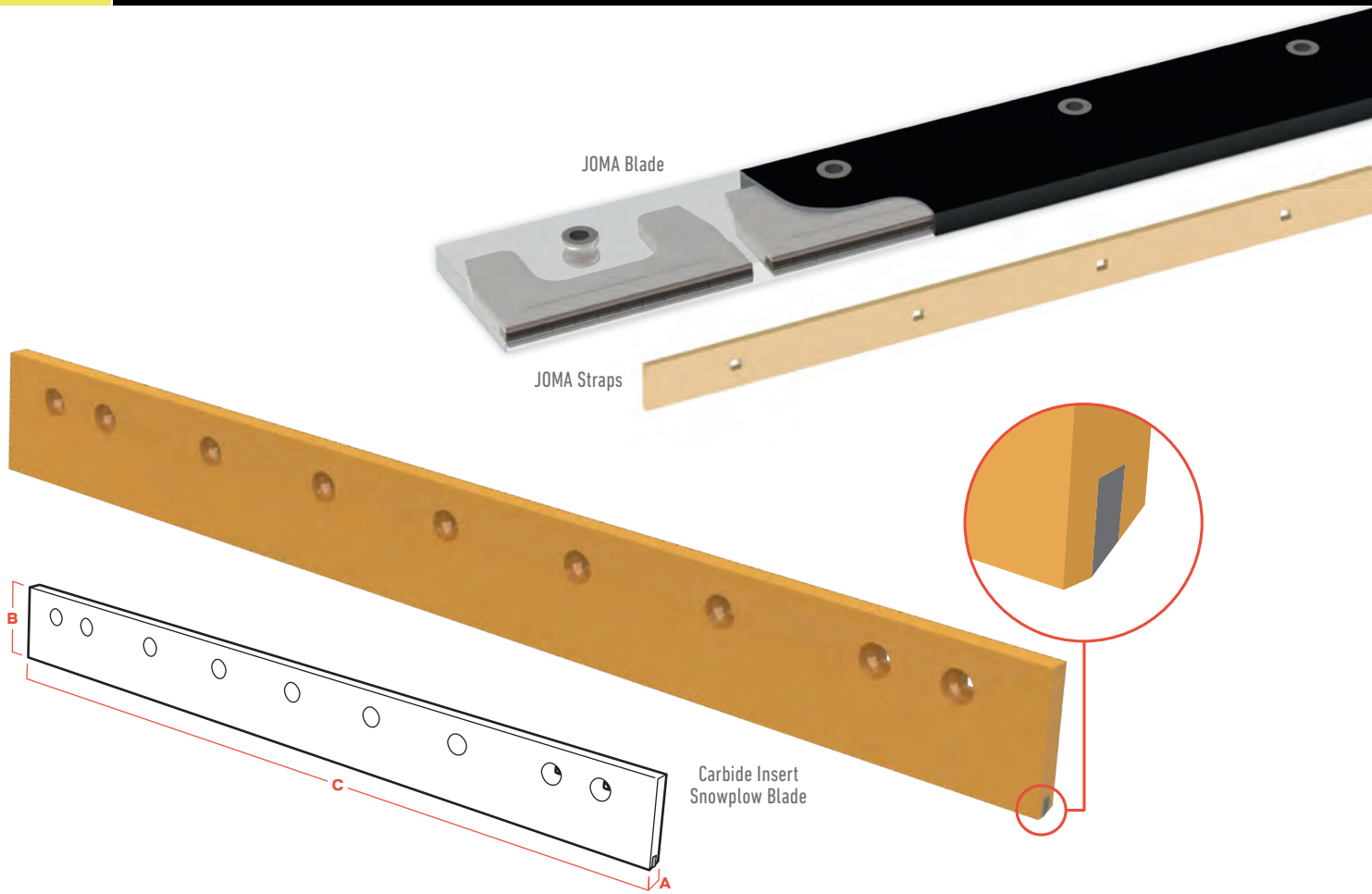
Overlays

PRODUCT	PART NUMBER	WEIGHT (KG)	NO. OF HOLES	BOLT SIZE	A	B	C
					THICKNESS	WIDTH	LENGTH
Cat 112-140 Overlay	GB-6D1904	22.5	8	5/8"	1/2"	9.25"	1.5ft
Cat 12-160 Overlay	GB-6Y2805	12.2	8	3/4"	1/2"	9.25"	1.75ft
Cat 14-16 Overlay	GB-7D9999	13.1	8	3/4"	1/2"	9.25"	2ft
Cat Overlay 6"	GB-2322142	10.2	8	3/4"	5/8"	9.25"	1.5ft
John Deere 670-772 Overlay LH	GB-JDT1624-68	12	7	5/8"	1/2"	8.5"	2ft
John Deere 670-772 Overlay RH	GB-JDT1624-69	12	7	5/8"	1/2"	8.5"	2ft
John Deere 670-772 Overlay	GB-JD-T70927	17.2	10	5/8"	5/8"	9"	2ft

End Bits

PRODUCT	PART NUMBER	WEIGHT (KG)	NO. OF HOLES	BOLT SIZE	A	B	C
					THICKNESS	WIDTH	LENGTH
Cat 16G RH End Bit	GB-9D4880	9.7	4	3/4"	3/4"	6"	1.5ft
Cat 16G LH End Bit	GB-9D4881	9.7	4	3/4"	3/4"	6"	1.5ft
Cat 14G RH End Bit	GB-9J4405	8.1	4	3/4"	5/8"	6"	1.5ft
Cat 14G LH End Bit	GB-9J4406	8.1	4	3/4"	5/8"	6"	1.5ft
Cat 12-160 End Bit	GB-8E5529	7.6	5	3/4"	5/8"	6"	1.5ft
Cat 12-143 End Bit	GB-8E5531	7.9	5	5/8"	5/8"	6"	1.5ft

SNOW PLOW BLADES



Snow Plow Blades

PRODUCT	PART NUMBER	NO. OF HOLES	A	B	C
			THICKNESS	WIDTH	LENGTH
4ft Carbide Insert Snow Plow Blade	GB-CIAB664844-A	9	3/4"	6"	4ft
5ft Carbide Insert Snow Plow Blade	GB-CIAB766044-A	11	3/4"	6"	5ft
3ft JOMA Blade	JOMA-6000X3	3	1"	6"	3ft
4ft JOMA Blade	JOMA-6000X4	4	1"	6"	4ft
3ft JOMA Strap	JOMA-STRAP3SEH	3	-	-	3ft
4ft JOMA Strap	JOMA-STRAP4SEH	4	-	-	4ft

STANDARD BOLT SIZE NOTE

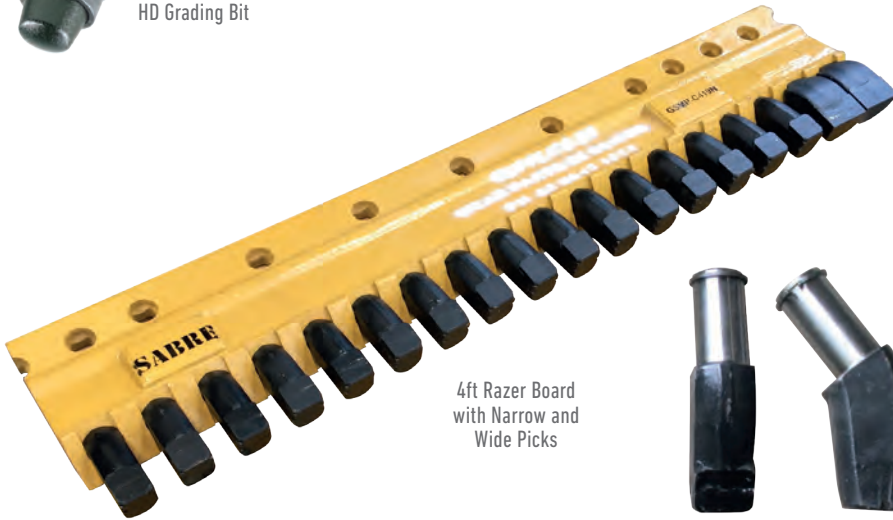
Standard snow plow blades take 5/8" bolts



HD Grading Bit



Black Cat Bit Board



4ft Razer Board with Narrow and Wide Picks



Narrow Razer Pick



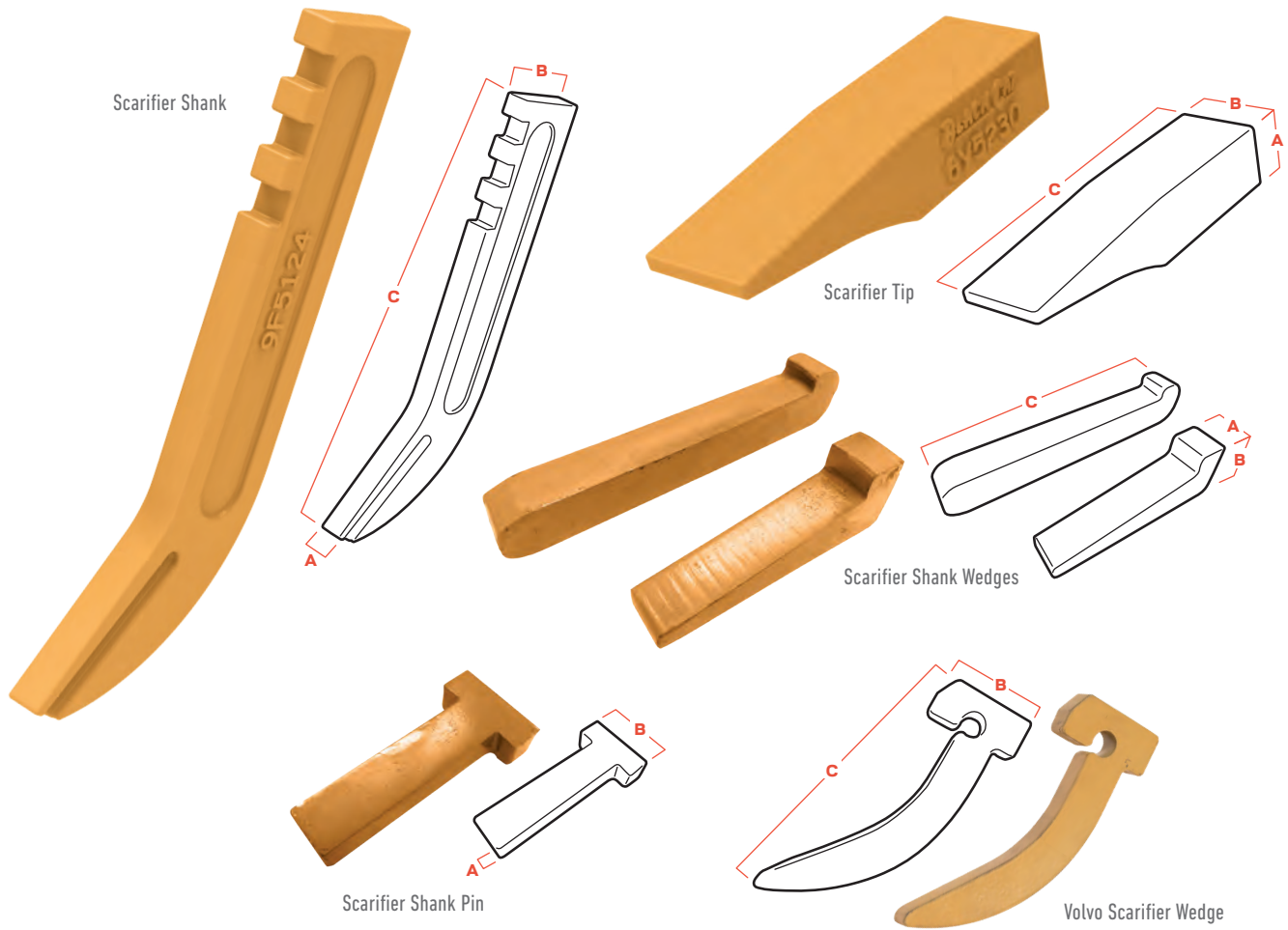
Wide Razer Pick

Bit Boards & Bits

PRODUCT	PART NUMBER	NO. OF BITS	HOLE QTY	BOLT SIZE	WIDTH	LENGTH
Black Cat Bit Board 3ft	GB-BC2000-36-34	24	7	3/4"	6"	3ft
Black Cat Bit Board 4ft	GB-BC2000-48-34	32	9	3/4"	6"	4ft
Black Cat HD Grading Bit	GB-C855HD	-	-	-	-	-
Black Cat Sharp Grading Bit	GB-C855LR	-	-	-	-	-
Black Cat Blunt Grading Bit	GB-C87HDRP	-	-	-	-	-

Razer Blades & Picks

PRODUCT	PART NUMBER	NO. OF BITS	BOLT SIZE	LENGTH
4ft Razer Tool Board – Narrow Pick Spacing	R-TBE419N	18	3/4"	4ft
3ft Razer Tool Board – Wide Pick Spacing	R-TBE419W	13	3/4"	3ft
Narrow Razer Pick	R-GSP11H45C	-	-	-
Wide Razer Pick	R-GSP09H45C	-	-	-



Scarifier Tips

PRODUCT	PART NUMBER	WEIGHT (KG)	A	B	C
			THICKNESS	WIDTH	LENGTH
Scarifier Tip	GB-6Y5230 (Was 2D5572)	1.5	36	48	181

Scarifier Shanks

PRODUCT	PART NUMBER	WEIGHT (KG)	A	B	C
			THICKNESS	WIDTH	LENGTH
Scarifier Shank	GB-9F5124	5.6	25	76	438

Scarifier Pins & Wedges

PRODUCT	PART NUMBER	WEIGHT (KG)	A	B	C
			THICKNESS	WIDTH	LENGTH
Scarifier Shank Pin	GB-5K1459-XA	0.4	17	51	114
Scarifier Shank Wedge	GB-9F5124W-XA	0.5	25	42	120
Komatsu Wedge	GB-2327013142	1.0	25	35	190
Volvo Scarifier Wedge (Suits 12mm Ø Pin)	GB-CH98551	0.4	12	54	150